



TIRE MANUAL MOUNTING GUIDELINES

TPMS SENSOR SERVICE GUIDELINES



SCOPE AND SUMMARY:

This document provides a guideline for tire manual mounting using EnTire/TRW TPM sensors. This document does not cover any other TPM sensors.

- Step 1 Rim clamping
- Step 2 Head adjustment
- Step 3 Tire / Wheel Lubing
- Step 4 Sensor location
- Step 5 Inner bead mounting
- Step 6 Outer bead mounting
- Step 7 Verification
- Step 8 Tire inflation

Date : 06 May 5th

TPMS SENSOR SERVICE GUIDELINES



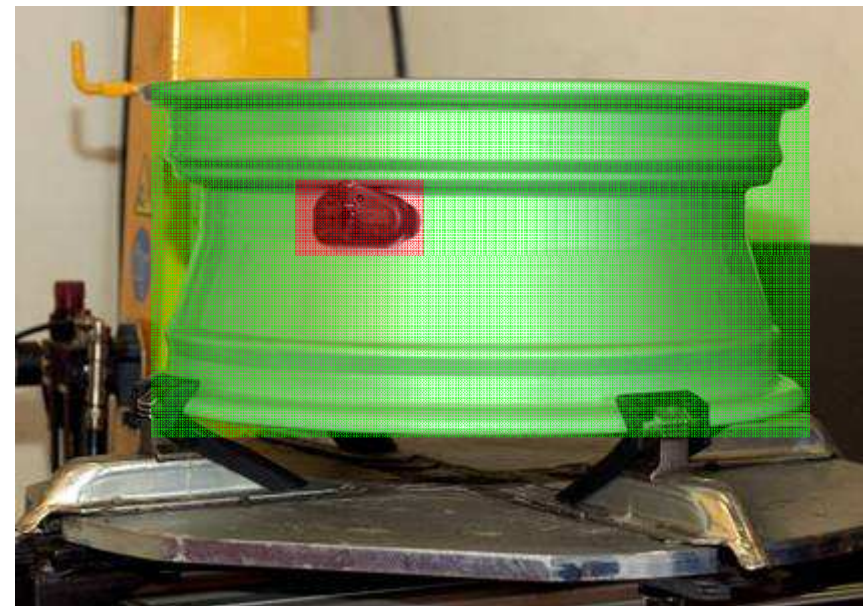
- 1 Place the curb side of the rim up and clamp it as shown on the picture.



- 2 Adjust the mounting head so that it sits on the edge of the rim.

Date : 06 May 5th

TPMS SENSOR SERVICE GUIDELINES



- 3 Apply lubricant to the entire surface of the rim and also to the two beads of the tire. Avoid lubricant coming into contact with the sensor housing.

Place the tire on the rim. Please make sure that directional tires such as selected performance and winter tires are mounted in the appropriate direction.



Zone with no lubrication constraints (rim profile)



Zone to avoid lubrication.

Date : 06 May 5th

TPMS SENSOR SERVICE GUIDELINES



- 4 Now, slide the lower bead of the tire partly over the lip of the rim. Rotate the table and wheel to place the sensor/valve at 5 o'clock relative to the mounting head.

Date : 06 May 5th

TPMS SENSOR SERVICE GUIDELINES



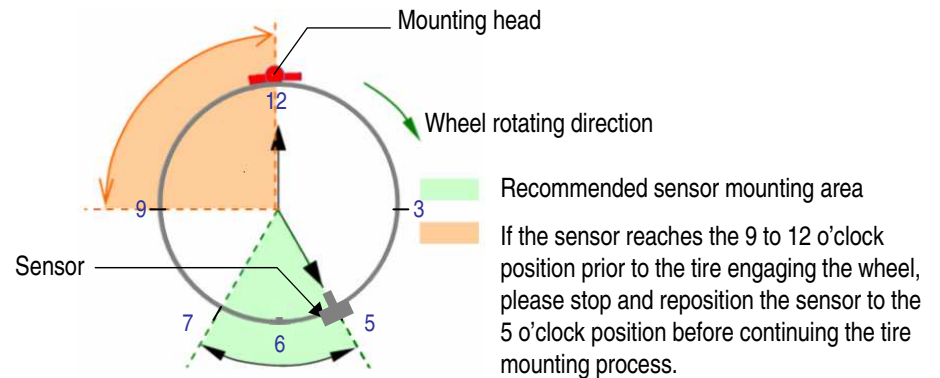
5 Inner bead :
Engage the bead partly below the mounting head and rotate the table while manually pushing and guiding the tire toward the drop well.



6 Outer bead :
Reposition the sensor/valve at 5 o'clock. Engage the bead partly on the mounting head and rotate the table while manually pushing and guiding the tire until mounting is complete.



7
If mounting guidelines are respected, the tire beads will not press against the sensor housing.



Date : 06 May 5th

TPMS SENSOR SERVICE GUIDELINES



- 8** Unclamp the wheel from the table. Remove the valve cap and the valve core⁽¹⁾ from the valve stem and keep these in a safe place. Inflate the tire up to 3.5 bars (50 psi) (bead seating pressure notified by specific sound). Re-install the valve core⁽²⁾ using the normal process and adjust the tire pressure to the recommended placard pressure. Re-install the valve cap and ensure it is finger tight.

(1) The valve core is removed so that the air flow entering the tire is strong enough to move the beads into their seats.

(2) Use the removed valve core. However, if it is damaged, only replace it with an appropriate valve core.

Date : 06 May 5th