

FIXED ANGLE TPMS SENSOR MANUAL MOUNTING GUIDELINES HONDA DESIGN

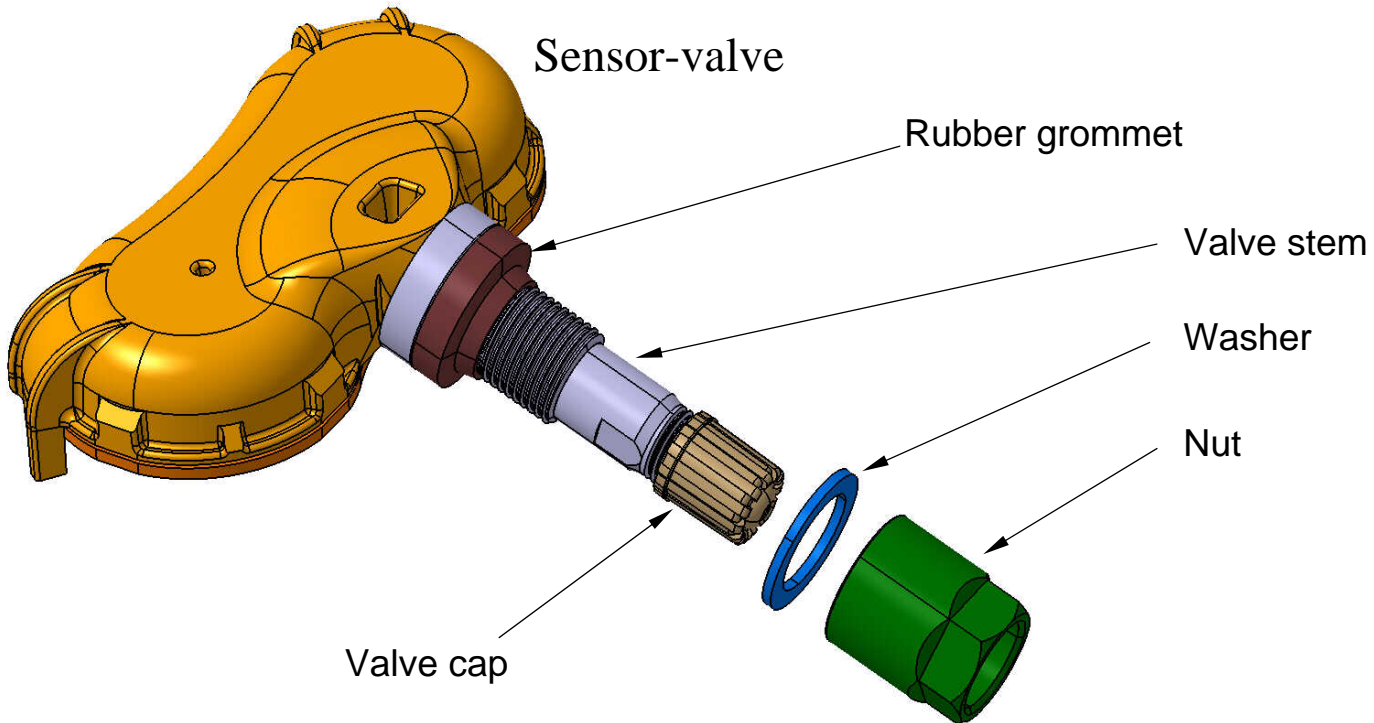
SCOPE AND SUMMARY:

This document outlines the guidelines for the manual mounting on the rim of EnTire/TRW fixed angle TPM sensors. This document does not cover any other TPM sensors.

- Sensor & valve components
- Step 1 Start fitting the valve unit on the rim
- Step 2 Tighten the nut
- Step 3 Check the assembly sensor – valve – rim

TPMS SENSOR SERVICE GUIDELINES

Sensor & valve components

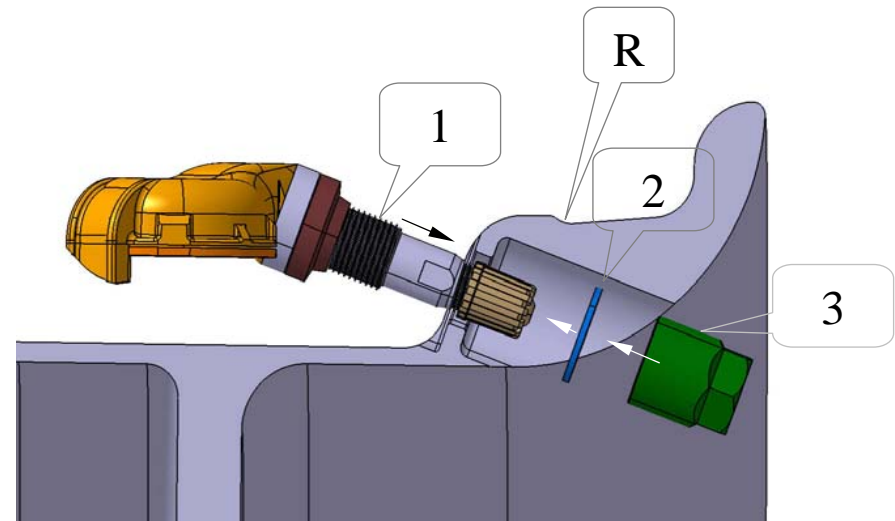


Date : 07 April 25th

TPMS SENSOR SERVICE GUIDELINES

Step 1 : Start fitting the sensor - valve unit on the rim

1. Slide the sensor-valve unit (1) through the rim (R) valve hole.
2. Hold the sensor against the rim and the rubber grommet against the sealing surface.
3. Insert the washer(2) then the nut(3) over the valve stem. Please note that it is not necessary to remove the valve cap.
4. Start tightening the nut by hand



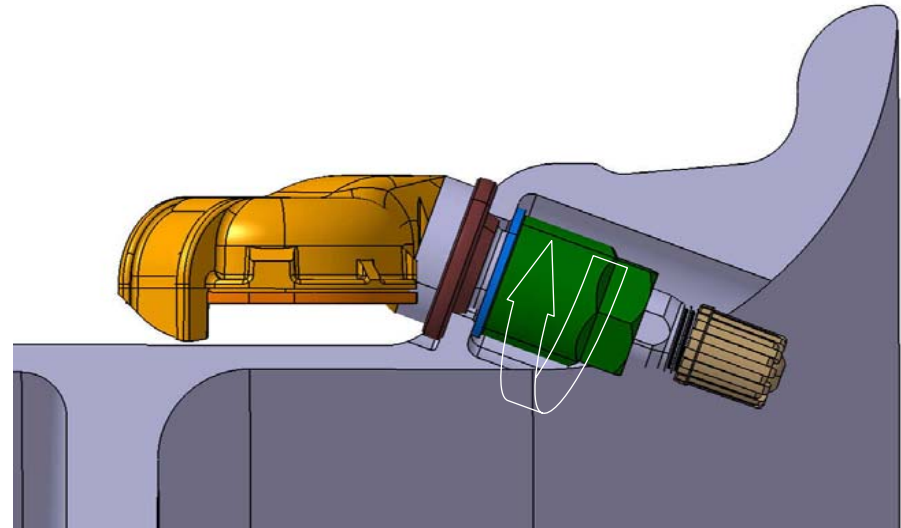
Date : 07 April 25th

TPMS SENSOR SERVICE GUIDELINES

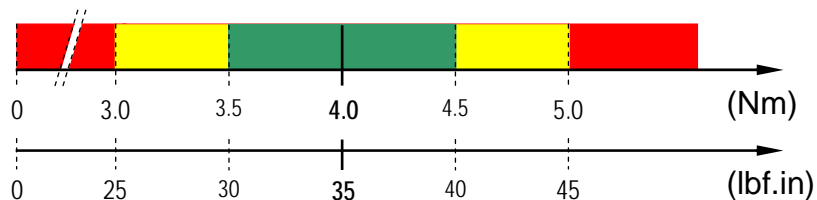
Step 2 : Tighten the nut

1. Continue to tighten the nut until contact with the rim
2. Then tighten to the final torque.
 - The recommended torque setting is 4.0 Nm (35 lbf.in).
 - This allows the final torque to be between 3.5 to 4.5 Nm if a +/- 12 % tolerance torque wrench is used. (Note : it is recommended to use a class B tool but a class C tool is acceptable)

The standard recommended torque range is given by the ETRTO, TRA... for a rubber corner joint valve.



Nut manual tightening torque



- Dispersion with +/- 12% tolerance (example)
- Standards recommended range
- Out of range

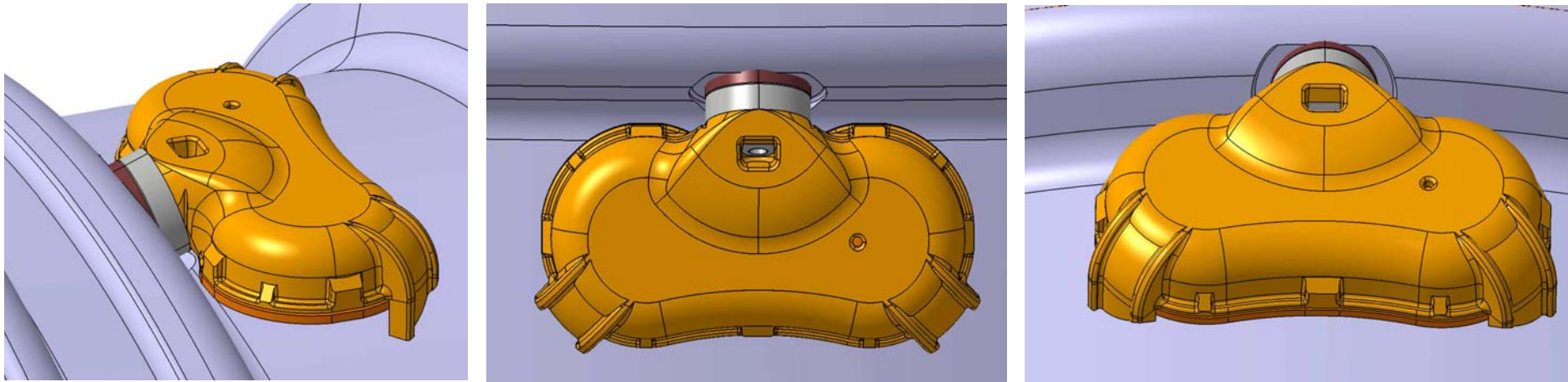
Important :

Tighten slowly with quarter turn steps until the final torque is reached.

Date : 07 April 25th

TPMS SENSOR SERVICE GUIDELINES

Step 3 : Check the assembly sensor-valve - rim



Check that the sensor is firmly attached to the rim at the valve hole interface.

Final positioning of the sensor feet is dependent on the wheel dimensions and may not be uniform. Possibilities are neither foot, one foot or both feet may contact the wheel drop center.

WARNING : Risk of damage during the tire mounting / dismounting if the sensor is not firmly attached to the rim.