

## FIXED ANGLE TPMS SENSOR MANUAL DISMOUNTING AND REUSE Honda Design



## SCOPE AND SUMMARY:

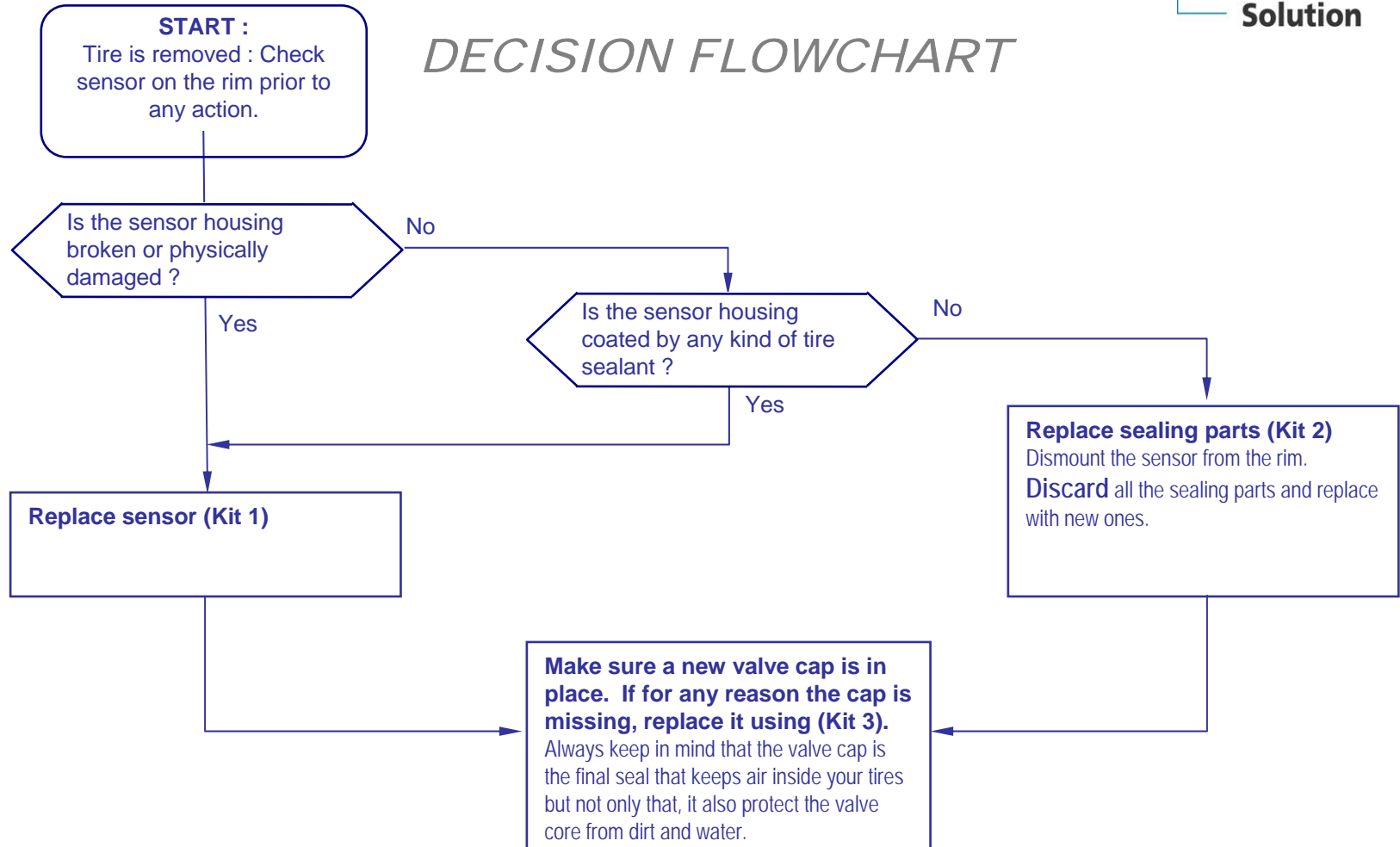
This document outlines the guidelines for reusing or dismounting the EnTire/TRW fixed angle TPM sensors. This document does not cover any other TPM sensors.

- Decision flowchart
- Sensor dismounting
- Available kits

# TPMS SENSOR SERVICE GUIDELINES



## DECISION FLOWCHART



Date : 07 Apr 26<sup>th</sup>

## *SENSOR DISMOUNTING*



1

Unscrew the nut .



2

Remove the sensor from the rim.  
Dismount and immediately discard all  
the sealing parts (rubber grommet,  
valve core and valve cap)

Other sensor removal techniques such as the “valve push through” practice requires additional care as to prevent damage to the sensor.

The sensor assembly must be inspected for damage and verified operational when reinstalled. EnTire reuse Guidelines for replacement part kits must still be followed.

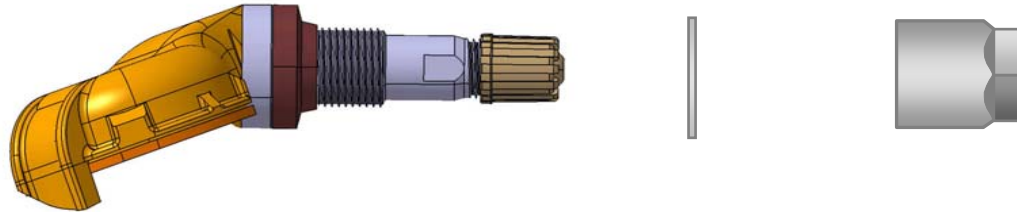
Date : 07 Apr 26<sup>th</sup>

# TPMS SENSOR SERVICE GUIDELINES



## AVAILABLE KITS

**kit 1:** Sensor including valve core and cap+ (washer) + nut  
REF #:



**kit 2:** Rubber grommet + valve core + cap  
REF #:



**kit 3:** cap  
REF #:



Date : 07 Apr 26<sup>th</sup>