



## ADJUSTABLE ANGLE TPMS SENSOR MANUAL DISMOUNTING AND REUSE Honda design

# TPMS SENSOR SERVICE GUIDELINES

---



## SCOPE AND SUMMARY:

This document outlines the guidelines for reusing or dismounting the EnTire/TRW adjustable angle TPM sensors. This document does not cover any other TPM sensors.

- Decision flowchart
- Sensor-valve dismounting
- Available kits

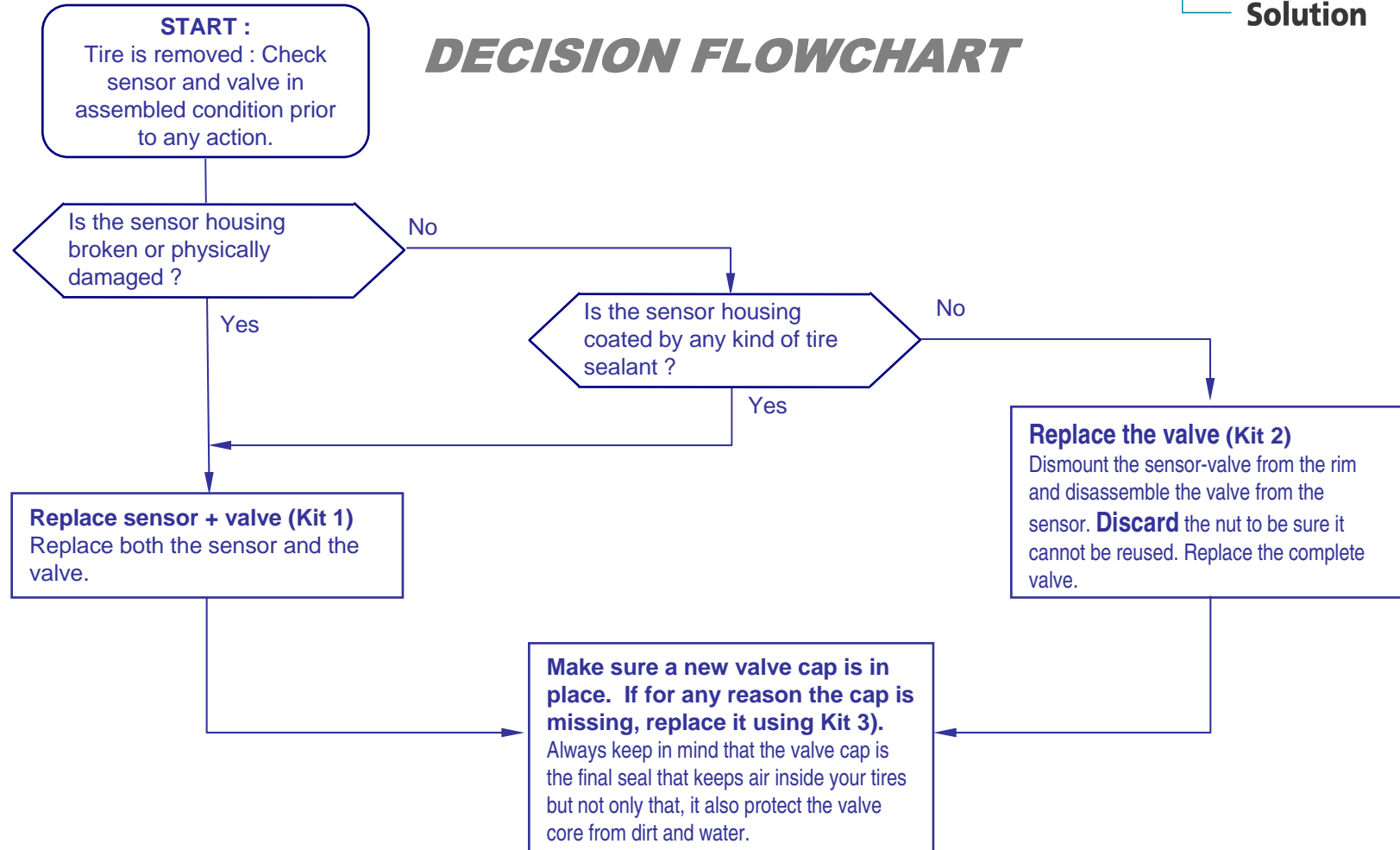
---

Date : 06 April 28<sup>th</sup>

# TPMS SENSOR SERVICE GUIDELINES



## DECISION FLOWCHART



Date : 06 April 28<sup>th</sup>

# TPMS SENSOR SERVICE GUIDELINES



## ***SENSOR DISMOUNTING***



**1**

Unscrew the nut using a 11 mm socket



**2**

Remove the sensor plus valve from the rim and immediately discard the nut

**IMPORTANT:** There is a break away feature inside the nut which is used to set the torque on the screw. This is a one time use feature. For this reason the valve stem and the nut cannot be reused.

Date : 06 April 28<sup>th</sup>

# TPMS SENSOR SERVICE GUIDELINES



## ***AVAILABLE KITS***

**kit 1:** Sensor + complete valve. Including screw, valve stem and rubber grommet, nut and cap  
REF #:



**kit 2:** complete valve.  
Including screw, valve stem and rubber grommet, nut and cap  
REF #:



**kit 3:** valve cap  
REF #:



Date : 06 April 28<sup>th</sup>